



FRONT ELEVATION 'B' - PRAIRIE



*Our standards are above standard*

## The Burgundy in Ambleside

- **2322 sq.ft plan**
- Upgraded Exterior elevations
- 9' ceilings on main floor
- 28' or 30' configuration
- Sunken Foyer and Mud Room
- Large windows with grills
- Custom door/window headers
- 5 panel upgraded interior doors
- Custom made closet shelving
- Vaulted Master Suite ceiling
- Vaulted Bonus Room area
- Extra wide main to second floor stairs
- Metal spindles and stained railing
- Large walk in closet
- Bonus Room with Pocket office
- **Extra Large Ensuite**
- Tiled glass shower
- 2<sup>nd</sup> Floor Laundry Room
- 6 GE appliances
- Upgraded Delta plumbing fixtures
- Cold Room for extra storage
- Raised basement windows

There is **1** Burgundy model that is **MOVE-IN READY** for immediate possession!!!

*Ambleside*  
IN WINDERMERE



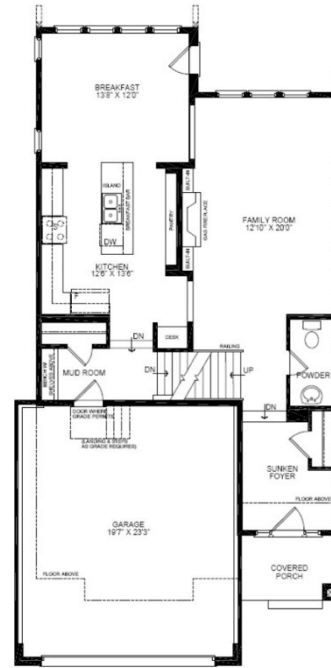
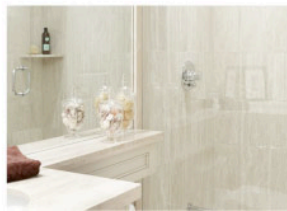
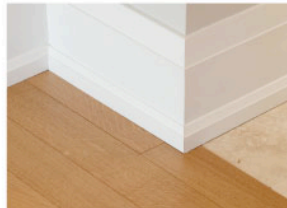
Call Curtis today for more info!

**907-5577**

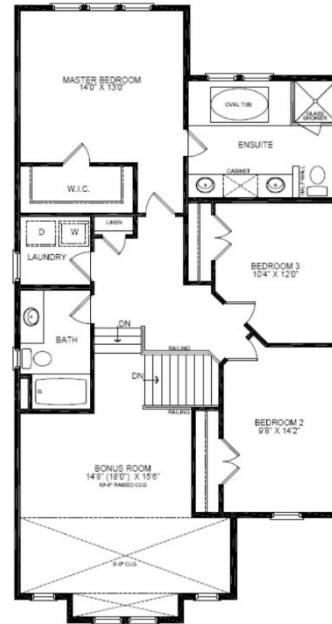


*Our standards are above standard*

## The Burgundy in Ambleside



GROUND FLOOR ELEV. 'B'



SECOND FLOOR ELEV. 'B'



Realty Executive  
**Curtis Stasiuk**  
780-907-3577

[westbrookhomes.ca](http://westbrookhomes.ca)

[twitter.com/westbrookhomes](https://twitter.com/westbrookhomes)

*Ambleside*  
IN WINDERMERE