



Our standards are above standard

The Chianti in Ambleside

- **2378 sq.ft plan**
- Upgraded Exterior elevations
- 9' ceilings on main floor
- Covered rear deck
- 28' or 30' configuration
- Sunken Foyer and Mud Room
- Large windows with grills
- Custom door/window headers
- 5 panel upgraded interior doors
- Custom made closet shelving
- Vaulted Master Suite ceiling
- Extra wide main to second floor stairs
- Metal spindles and stained railing
- Large walk in closet
- Bonus Room with Pocket office
- **Large Gourmet kitchen**
- Stainless steel hood-fan
- 6 GE appliances
- Upgraded Delta plumbing fixtures
- Cold Room for extra storage
- Raised basement windows
- Large Ensuite with glass shower

There are **2** Chianti models currently under construction for quick possessions!

Ambleside

 IN WINDERMERE



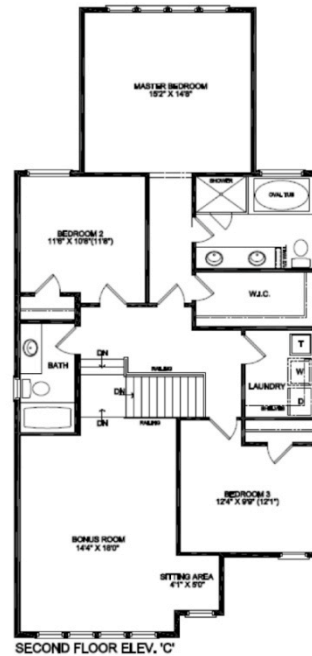
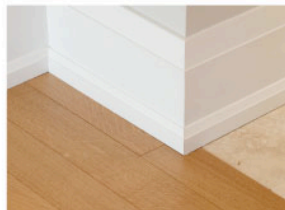
Call Curtis today for more info!

907-5577



Our standards are above standard

The Chianti in Ambleside



Realty Executive
Curtis Stasiuk
780-907-3577

westbrookhomes.ca

twitter.com/westbrookhomes

Ambleside
IN WINDERMERE